

# Minor Scales

Major (Ionian mode)

do re mi fa so la ti do

The Major (Ionian mode) scale is shown on a single treble clef staff. It consists of eight quarter notes: do, re, mi, fa, so, la, ti, do. Brackets are placed above the notes do-re-mi, re-mi-fa, and so-la-ti. The final note is a whole note.

Natural minor (Aeolian mode)

la ti do re mi fa so la

The Natural minor (Aeolian mode) scale is shown on a single treble clef staff. It consists of eight quarter notes: la, ti, do, re, mi, fa, so, la. Brackets are placed above the notes la-ti-do, do-re-mi, and so-la. The final note is a whole note.

Harmonic minor

Raised 7th

The Harmonic minor scale is shown on a single treble clef staff. It consists of eight quarter notes: la, ti, do, re, mi, fa, so, la. The 7th note, so, is marked with a sharp sign (#). Brackets are placed above the notes la-ti-do, do-re-mi, and so-la. The final note is a whole note.

Melodic minor

Raised 6th & 7th Lowered 6th & 7th

The Melodic minor scale is shown on a single treble clef staff. It consists of eight quarter notes: la, ti, do, re, mi, fa, so, la. The 6th note, fa, is marked with a sharp sign (#), and the 7th note, so, is also marked with a sharp sign (#). Brackets are placed above the notes la-ti-do, do-re-mi, and so-la. The final note is a whole note.

Harmonic minor

The Harmonic minor scale is shown on a single treble clef staff. It consists of eight quarter notes: la, ti, do, re, mi, fa, so, la. The 7th note, so, is marked with a sharp sign (#). The final note is a whole note.

Melodic minor

The Melodic minor scale is shown on a single treble clef staff. It consists of eight quarter notes: la, ti, do, re, mi, fa, so, la. The 6th note, fa, is marked with a sharp sign (#), and the 7th note, so, is also marked with a sharp sign (#). The final note is a whole note.

Harmonic minor 3rds

The Harmonic minor 3rds scale is shown on two treble clef staves. The first staff contains eight quarter notes: la, ti, do, re, mi, fa, so, la. The 7th note, so, is marked with a sharp sign (#). The second staff contains eight quarter notes: la, ti, do, re, mi, fa, so, la. The 6th note, fa, is marked with a sharp sign (#), and the 7th note, so, is also marked with a sharp sign (#). The final note is a whole note.

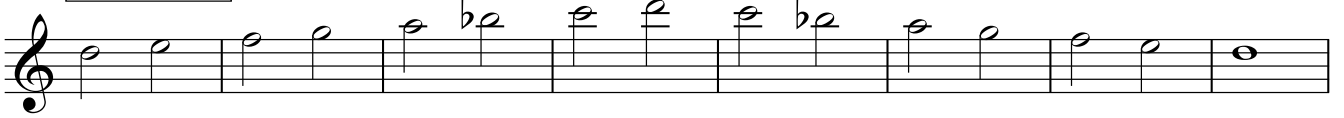
Melodic minor 3rds

The Melodic minor 3rds scale is shown on two treble clef staves. The first staff contains eight quarter notes: la, ti, do, re, mi, fa, so, la. The 6th note, fa, is marked with a sharp sign (#), and the 7th note, so, is also marked with a sharp sign (#). The second staff contains eight quarter notes: la, ti, do, re, mi, fa, so, la. The 6th note, fa, is marked with a sharp sign (#), and the 7th note, so, is also marked with a sharp sign (#). The final note is a whole note.

Major



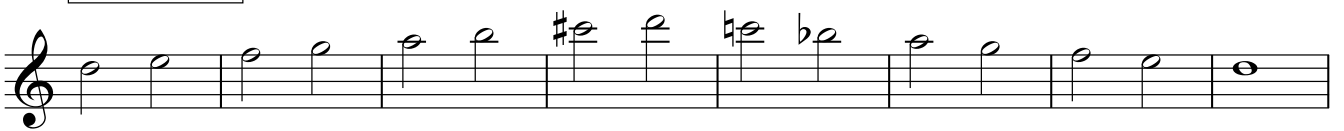
Natural minor



Harmonic minor



Melodic minor



Harmonic minor



Melodic minor



Harmonic minor 3rds



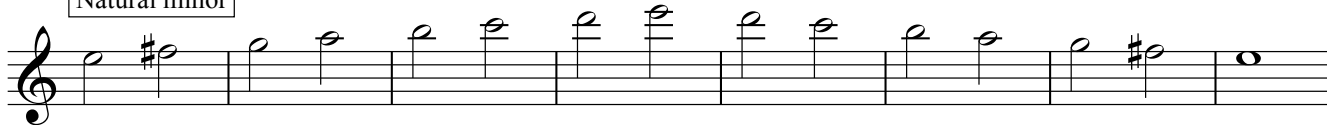
Melodic minor 3rds



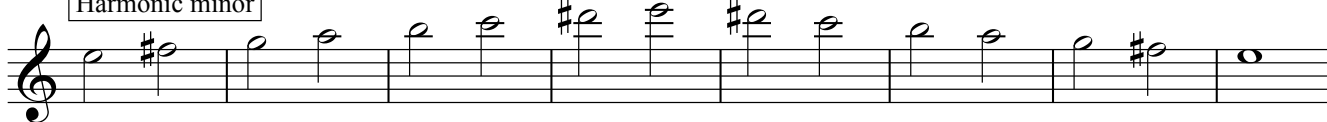
Major



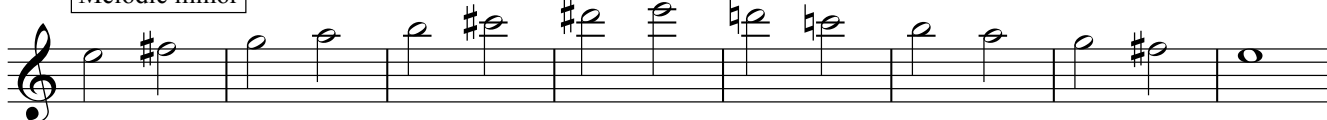
Natural minor



Harmonic minor



Melodic minor



Harmonic minor



Melodic minor



Harmonic minor 3rds



Melodic minor 3rds

